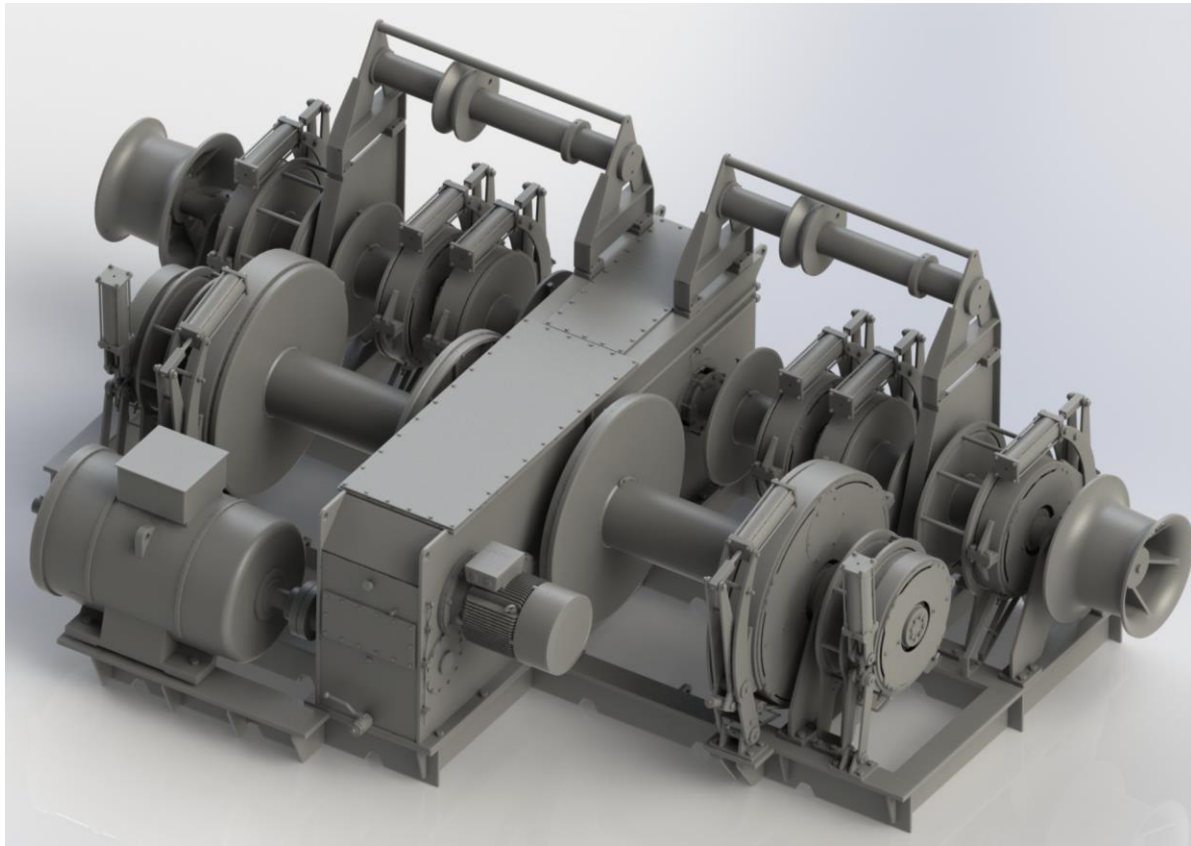


FISHING WINCHES



NEW STANDARD IN WINCH TECHNOLOGY

Thanks to the huge experience in winch technology combined with the experiences of fisherman. The brand Ridderinkhof became in the 70's the leading winch manufacturer in the North Sea twin beam trawler fleet industry. The success of that time reflects the quality of today, after 30-35 years of operating 24 hours/day and 6 days a week most of the winches are still running without require major service running smooth and silent as always.

THR Marine is continuing with these winches on the market. Our beam trawler winches are more or less standardized in power, drum capacities and more, but due to the fact that fishermen have own ideas the number of drums and the configuration per winch may vary per ship owner / ship designer.

FEATURES

- Motor power till 400 Hp
- Customizing drum sizes within our standard ranges
- Both electric or hydraulic driven and controlled.
- Gear drive in an oil bath gearbox, gearwheels very well accessible for service
- Designed for easy servicing short lead times on spares.
- Electric emergency motor and harbour drive.
- Seals are on exchangeable sleeves to prevent wear on the main shaft.
- Seawater resistant Aluminium brake and clutch cylinders with stainless steel pistons rods.
- Spooling gears.
- Sheaves for guiding.

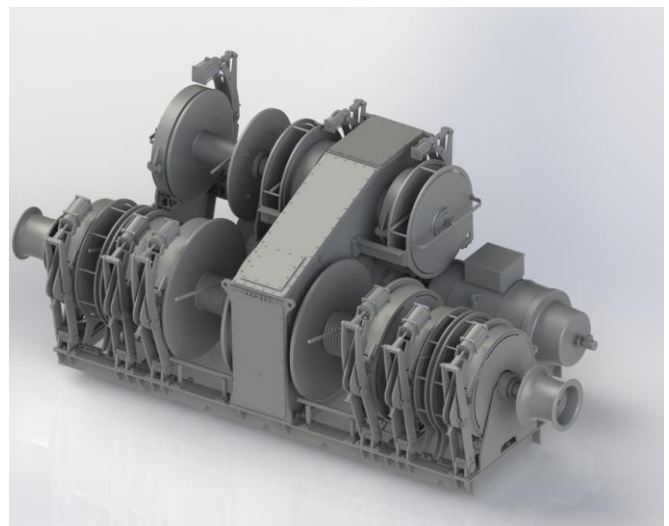
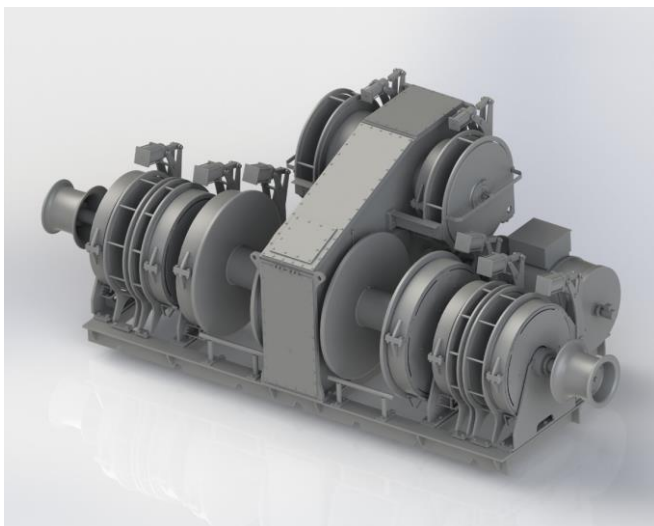
SPECIFICATIONS

Capacity

Twin rig drums	500 – 750 meter	Ø28 mm.
Slip hook drums	100 – 130 meter	Ø28 mm.
Jumper drums	050 – 075 meter	Ø28 mm.
Boom drums	100 – 125 meter	Ø32 mm.
Fishing drums	850 – 1000 meter	Ø32 mm.

Loads

Fishery line pull	2x 10 tonnes @ 45 m/min on average layer
Fishery line BHL	2x 30 tonnes on average layer



Specifications up to customer requirements is always possible.